



WILLMER ECO TECHNOLOGIES

A Stapes For Batter Tomorrow



Company Profile

A Stapes For Badder Tomorrow


- Save Water**
Save a Drop, Save the Future.
- Pure Water**
Pure Water is The World's First and Foremost Medicine.
- Recycle Water**
You Can't Recycle Wasted Time, But You Can Recycle Your Wasted Water.
- Reduce Water Discharge**
Reduce Water Consumption, It's you Investment For Your Next Generations.
- Water Harvest**
Collect Every Drop of Water to Increase Your Water Bank.

OUR PRODUCTS & SERVICES

A Stapes For Batter Tomorrow

- Sewage Treatment Plant (S.T.P)
- Effluent Treatment Plant (E.T.P)
- Water Treatment Plant (W.T.P)
- Pre-Fabricated (S.T.P, E.T.P & W.T.P) (Zincalume Tank, SS Tank, MS Tank)
- S.T.P, E.T.P, W.T.P, R.O, Boiler & Cooling Tower Chemical
- Project Consultancy (S.T.P, E.T.P & W.T.P)
- Hydro pneumatic System (HYPN)
- Water Softener
- Fire Fighting System
- Rainwater Harvesting
- Pre-Fabricated Bio Toilet
- Water Bodies, Fountain
- Swimming Pool Filtration
- Reverse Osmosis (R.O.)
- EV Charging Station
- All type of Electrical Panel's
- Solar Plant
- Tender Document Preparation
- MANUFACTURING , TRADING
- DESIGN & Document Preparation
- INSTALLATION & COMMISIONING
- OPERATION & MAINTENANCE
- TRUNKY PROJECTS





“TECHNOLOGY IS NOTHING. WHAT’S IMPORTANT IS THAT YOU HAVE A FAITH IN PEOPLE, THAT THEY’RE BASICALLY GOOD AND SMART, AND IF YOU GIVE THEM TOOLS, THEY’LL DO WONDERFUL THINGS WITH THEM.”

Willmer is a trade mark for Water Treatment and waste water treatment of Willmer Eco Technologies. We are a premier biotechnology business unit, dedicated to the developing, manufacturing and marketing of environmentally responsible products that offer effective natural bio solutions. The company is promoted by technocrats, who have developed path-breaking products. We use this capability of these tiny invisible forces to bring about beneficial transformations in our environment. The application of our technology is currently focused on aquaculture, **Industrial waste water (ETP)**, **Sewage treatment Plant (S.T.P)**, **Potable Water Treatment (W.T.P)**, **Reverse Osmosis (R.O)**, **De mineralize Plant (DM)**, **Water Softener**, **Swimming Pool Filtration**, **Fire Fighting System**, **Rain Water Harvesting**, **Hydropneumatic System (HYPN)**, **Solar Plant**, **All Type Electrical Panel** These remarkable products are of international standards, quality and performance. Willmer products safely accelerate the natural process and give the desired benefits to the user without any side effects. None of the Willmer 's products contain genetically modified microorganisms. These microorganisms are not harmful to either aquatic or land plants, birds, animals or humans and have been released all over the world into marine and fresh water lakes, ponds, rivers, municipal sewer lines, drains, septic systems and soil with complete ecological safety



WILLMER'S SUCCESS STORY

See your goal

Understand the obstacles

Create a positive mental picture

Clear your mind of self doubt

Embrace the challenge

Stay on track

Show the world you can do it

Start of Journey



Willmer Eco Technologies is Leading Company of the Water Treatment industry. Willmer has been the industry's standard Water Treatment ever since the 2010



By 2024, there are more than 100 Plus Project Completed Water Treatment Plants , Sewage Treatment Plants, Effluent Treatment Plant, Industrial R.O. Plant, DM Plants , HYPN System, Water Softener, Fire Fighting System, Rain Water Harvesting system, All Type Electrical Panel across Pan India, a rapid expansion fueled by Cost Efficient. There is Many Mile Stone were add in our journey. Indian Railway, Raj. Govt. Hospitals & BHEL , Railway Station Development Projects. They give us a chance to consultancy and Installation Testing Commissioning for West Water Recycling Effluent Treatment Plant & Sewage Treatment Plant .



OUR COMPANY CULTURE

Strategy implementation

putting processes in a company in perspective .assuring tradition and stability during changes. providing a rationale for allocating resources

Internal and external communication

stimulating internal and external organizational communication .serving as an effective public relations tool .informing employees about the company's goals and unifying their efforts toward accomplishing them

Management and leadership

directing behavior . improving individual and collective performance . enabling valuation of different actions and behavior .guiding current, critical, strategic decision making .helping to save the time . asserting leadership

Organizational climate

positively influencing organizational culture and climate . tightening interpersonal links in a company . strengthening the sense of unity and belonging . influencing employee satisfaction and commitment . reducing uncertainties for employees . reducing doubts, frictions and ambiguities . inspiring enthusiasm about the company . clarifying priorities and vague, undefined and even conflicting issues in a company . helping to prevent unconstructive and damaging processes

Our Company Mission

The fundamental principles and values of the company's policy which are adopted by all staff and associates, include: Promoting, professionalism, honesty, ethos and integrity in all company relationships, both with clients and staff. Building strong and permanent co-operational networks and relations with clients, rather than occasional ones, putting the emphasis on attaining the highest level of satisfaction and fulfillment of client's expectations. Assuring high levels of quality, perfection and integrity in the services provided. Constantly improving the procedures involved in the production and quality assurance of the project deliverables . Keeping up-to-date with newest scientific and technical progresses and demands, through channels of instant information search and up-take, continuous training and lifelong learning. Selecting the most efficient and effective project solutions in terms of technical, economic, social and environmental aspects. Safeguarding coherency and compliance with Greek and European legislation and international codes of practice, as well as respect of the socially responsible, professional and moral values adopted by the company.

Our Company Vision

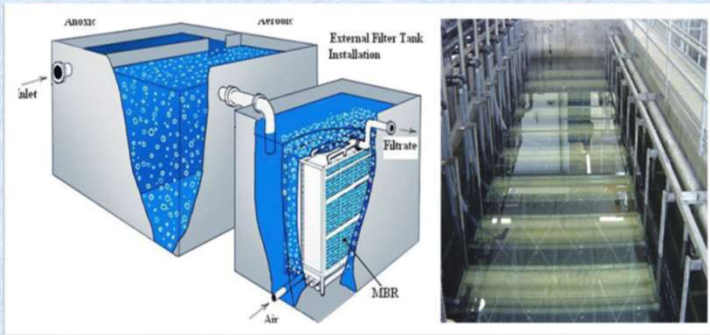
Willmer s vision is to be the best of the best. We are customer driven with quality services and products that conform to mutually agreed upon requirements. Our goal is to perform our functions correctly the first time. We will strive to become the role models in the Water management To do so, we the best Service Company in the industry relative to overall performance and attention to customer needs. To Provide a wide array of quality products that maximizes value to our customers. To be recognized as an innovator in enhanced products and services that solve customers' problems and reduce costs.

FOR OUR EMPLOYEES: To provide a quality work environment based upon teamwork and involvement. To achieve the industry's highest employee productivity.



MBBR/FAB, MBR, SBR TECHNOLOGY

MBR



SBR



MBBR



What Is MBR...?

MBR water treatment plant uses the membrane bioreactor for Wastewater Treatment Plant Design that is the combination of the biological waste-water process and membrane process. This membrane bioreactor design is the most used process to treat sewage water.

What Is SBR...?

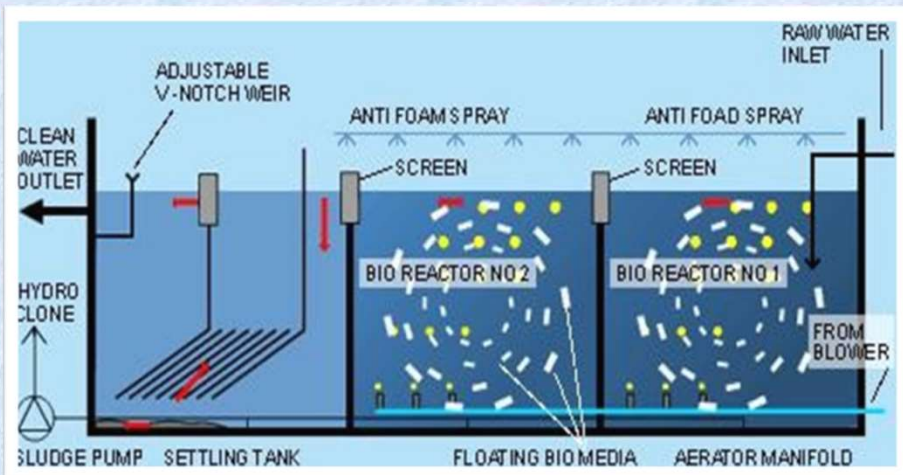
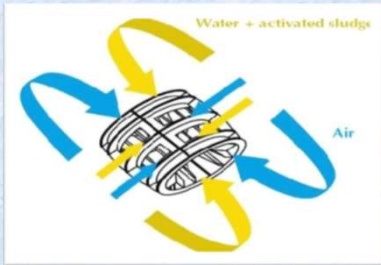
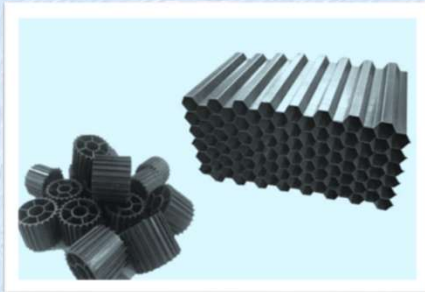
SBR- sequencing batch reactor plant uses the activated sludge to treat the wastewater. It is used for reducing the organic matters. It separates the water and activated sludge through the oxygen bubbles.

What Is MBBR/FAB...?

MBBR- moving bed bio film reactor sewage treatment plant is used in very less space, and that is known as a bio film process. These are the common definitions of all the sewage treatment plants that "Treated Water is Provided As Per PCB Norms".



MBBR/FAB TECHNOLOGY



MBBR / FAB technology uses biological process is less expensive than conventional biological treatment. It offers small footprint, is cost effective and meets any effluent requirements. In MBBR technology the bio film grow sand is protected within engineered plastic carriers, which are care fully designed with high internal surface area.

Basic Process

- BAR SCREEN
- SETTLING
- ROTAION OF MEDIA BY AIR
- FINAL SETTLING & SLUDGE RECYCLING
- TERTIARY TREATMENT

These bio film carriers are suspended and thoroughly mixed through out the water phase.

Technology it is possible to handle extremely high loading conditions without any problems of clogging and treat industrial and municipal waste water on a relatively small footprint.

This makes for an easy-to-operate, efficient, biological wastewater treatment that does not require any recirculation of the mixed liquor suspended solids (MLSS).The MBBR / FAB technology can be used for the treatment of both carbonaceous and nitrogenous pollution, in both municipal environments or in an industrial setting.

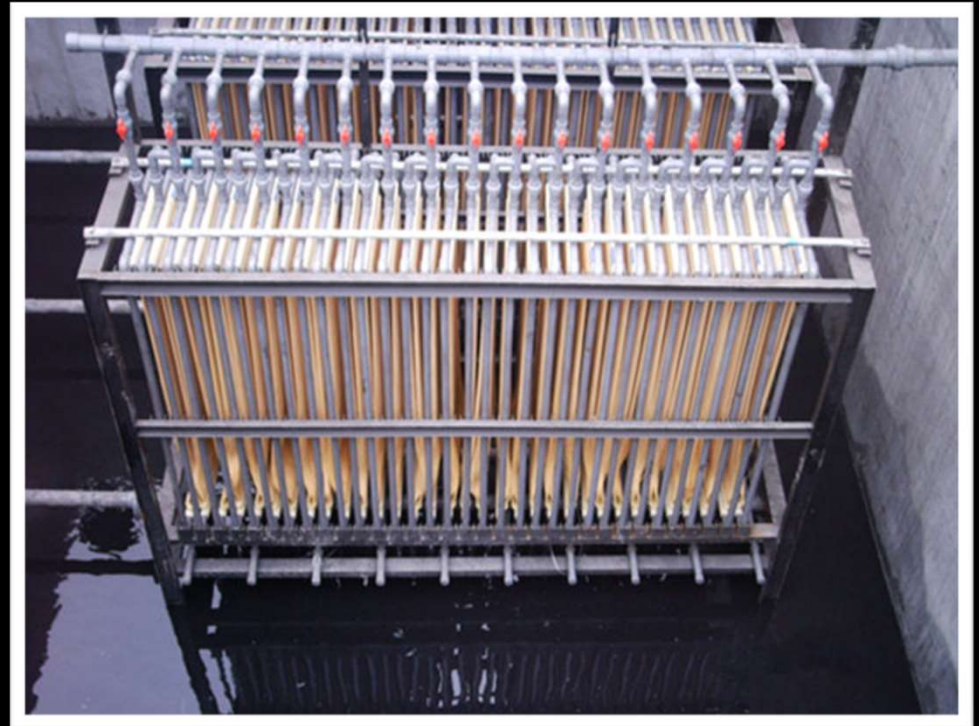


SBR- (Sequencing Batch Reactor)



The operation of an SBR is based on the fill-and- draw principle, which consists of the following five basic steps: Idle, Fill, React, Settle, and Draw. More than one operating strategy is possible during most of these steps

MBR- (Membrane Bio reactor)



Membrane bioreactor (MBR) system works by using membranes to separate solid waste from treated water in wastewater. The system uses a combination of biological treatment processes and membrane filtration to remove organic matter and suspended solids.

PRESSURE BOOSTING (HYDRO PNEUMATIC) SYSTEM



The hydro-pneumatic system generally comprises a pressure pump and a pressure tank. The specially designed pressure tank operates through high-pressure air, which ensures that the water is transported to its desired destination.

Segment & Application

- Residential/ Commercial/ industrial Buildings
- Airports
- Hotels
- Municipal Corporation
- Automotive
- Textile
- Steel/ Cement/ Pharma Industries
- Power
- IT Parks
- Hospitals Etc.....

Energy Savings

30%-50% savings achieved by installing VFDs. Energy Consumption is directly proportional to the volume pump and savings are readily quantified



PRESSURE BOOSTING (HYDRO PNEUMATIC) SYSTEM



Improved Process Control

- By matching pump output flow or pressure directly to the process requirements, small variations can be corrected rapidly by a VFD thereby improving performance
- Less likelihood of flow or pressure surges when the control device provides rates of change, which are virtually infinitely variable

Improved System Reliability

- Any reduction in speed achieved by using a VFD has major benefits in reducing pump wear, particularly in bearings and seals
- By using reliability indices, time periods between maintenance or breakdowns can be accurately computed

Willmer Eco Technologies is provide HYPN Services include the installation, maintenance, monitoring.



MANUFACTURING UNIT



ZINC ALUMINIUM FABRICATED S.T.P , W.T.P & E.T.P



A Zincalume Tank STP Tank is a sewage treatment tank crafted from Zincalume steel, a robust and corrosion-resistant material. These tanks are engineered to effectively manage sewage and wastewater, positioning them as an ideal choice for diverse applications, including residential, commercial, and industrial settings



ZINC ALUMINIUM FABRICATED S.T.P , W.T.P & E.T.P



Their durable construction and efficient sewage treatment capabilities, Zincalume Tank STP Tanks offer a reliable solution to address sewage management needs across various sectors.

The Benefits of Zincalume Tank STP Tanks

Durability: Zincalume tanks are known for their exceptional durability. The Zincalume steel construction provides excellent resistance to corrosion, ensuring that the tank can withstand the harsh conditions often associated with sewage treatment facilities.

Longevity: Due to their corrosion resistance, Zincalume tanks have a longer lifespan compared to traditional materials. This longevity makes them a cost-effective solution in the long run, as they require less frequent maintenance and replacement.

Eco-Friendly: Zincalume tanks are environmentally friendly, as they are made from recyclable materials. Additionally, their long lifespan reduces the need for frequent replacements, further contributing to their eco-friendliness.

Customization: These tanks can be customized to suit specific project requirements, including size, shape, and additional features such as access hatches, inlet and outlet options, and fittings for various accessories.

Low Maintenance: Zincalume tanks require minimal maintenance, reducing the overall operational costs associated with sewage treatment facilities.





Installation and Maintenance

Installation: The installation of Zincalume tanks is straightforward and can be carried out by experienced professionals. Proper installation is crucial to ensuring the optimal performance and longevity of the tank.

Maintenance: Regular inspection and maintenance are essential to keep Zincalume tanks functioning efficiently. However, due to their durable and corrosion-resistant nature, the maintenance requirements are minimal compared to other materials.

Considerations for Choosing a Zincalume Tank STP Tank

Capacity: Selecting the appropriate tank capacity is crucial to ensuring that the sewage treatment system can handle the expected volume of wastewater.

Regulations: Compliance with local regulations and standards is essential when choosing a Zincalume tank for sewage treatment purposes. Ensure that the selected tank meets the required specifications and guidelines.

Manufacturer Reputation: Choose a reputable manufacturer with a proven track record of producing high-quality Zincalume tanks. This ensures the reliability and performance of the tank for years to come.

Conclusion: Zincalume Tank STP Tanks are an excellent choice for sewage treatment applications, offering durability, longevity, and eco-friendliness. Their versatility and customization options make them suitable for a wide range of residential, commercial, and industrial projects. By understanding the benefits, applications, and considerations associated with Zincalume tanks, you can make an informed decision when selecting a sewage treatment solution for your specific needs.



M.S FABRICATED S.T.P , W.T.P & E.T.P



M.S FABRICATED

- ✓ MS TANKS
- ✓ SAND FILTERAER
- ✓ ACTIVATED CARBON FILTER

MS Fabrication Work refers to the process of designing, manufacturing, and installing structures or components using Mild Steel (MS). These tanks are engineered to effectively manage sewage and wastewater, positioning them as an ideal choice for diverse applications, including residential, commercial, and industrial settings.

FILTRATION SYSTEM S.T.P , W.T.P & E.T.P



Water Treatment Plant (W.T.P)

- Ultra Filtration System
- Ultraviolet Disinfection
- Water Recycling Plant
- Reverse Osmosis Plant (R.O)
- Dematerialize Plant (D.M)
- Water Softener

Filtration is a common step in the treatment process for wastewater at various types of plants, including sewage treatment plants (STPs), effluent treatment plants (ETPs), and water treatment plants (WTPs)

S.S FABRICATED S.T.P , W.T.P & E.T.P



S.S FABRICATED

- ✓ SS Tanks
- ✓ SAND FILTER
- ✓ ACTIVATED CARBON FILTER

SS Fabrication Work refers to the process of designing, manufacturing, and installing structures or components using (SS) These tanks are engineered to effectively manage sewage and wastewater, positioning them as an ideal choice for diverse applications, including residential, commercial, and industrial settings



1 MLD S.T.P RAILWAY
WORK SHOP
COLONY (W.C.R)
KOTA , RAJASTHAN
(M.B.B.R)
TECHNOLOGY





**50 KLD E.T.P PLANT VANDE BHARAHT TRAIN,DEPOT DELHI.
INDIAN RAILWAY**



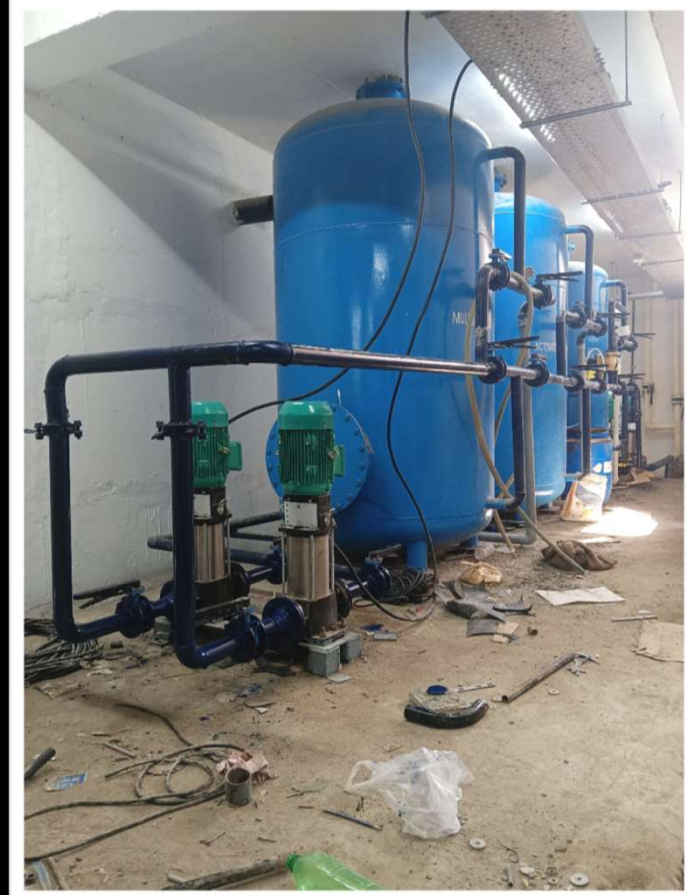


**150 KLD S.T.P PLANT RAJ BHADUR MEMORIAL GOVT.
HOSPITAL BHARTPUR RAJASTHAN**



**150 KLD S.T.P PLANT RAJ BHADUR
MEMORIAL GOVT. HOSPITAL
BHARTPUR RAJASTHAN**





**HYPN SYSTEM & WATER
TRETMENT PLANT JAISALMER
RAILWAY STATION RAJASTHAN**



**SEWAGE TRETMENT PLANT KOTA RAILWAY STATION
RAJASTHAN**



**WATER TRETMENT PLANT Shubah
Avenue & Shubah Sanskar KOTA
RAJASTHAN**



**150 KLD S.T.P GOVT AMRIT KAUR
HOSPITAL, BEWAR, AJMER, RAJASTHAN**



**100 KLD S.T.P R.U.H.S,
JAIPUR, RAJASTHAN**



**W.T.P RAILWAY LAUNDRY,
KOTA, RAJASTHAN**



**200 KLD S.T.P BAHRATH VIKAS
PARISHAD, KOTA, RAJASTHAN**





25 KLD STP Napino Auto and Electronics Limited, Halol, Vadodara, Gujrat



150 KLD STP Patna High Court, Bihar



150 Kld Sedimentation Plant
Florence Sand Stone, Bundi, Raj.



The Great Mall Of Kota, (Ahaluwalia
Contract India Ltd.) 200 KLD STP



Pollution Control Board 10 Kld STP Pollution Control Board, Jaipur



Mahatma Gandhi Hospital 300 Kld STP Bhilwara, Rajasthan



**50 KLD WATER TRETMENT
PLANT TAFE J FARM BHAWANI
MANDI KOTA RAJASTHAN**



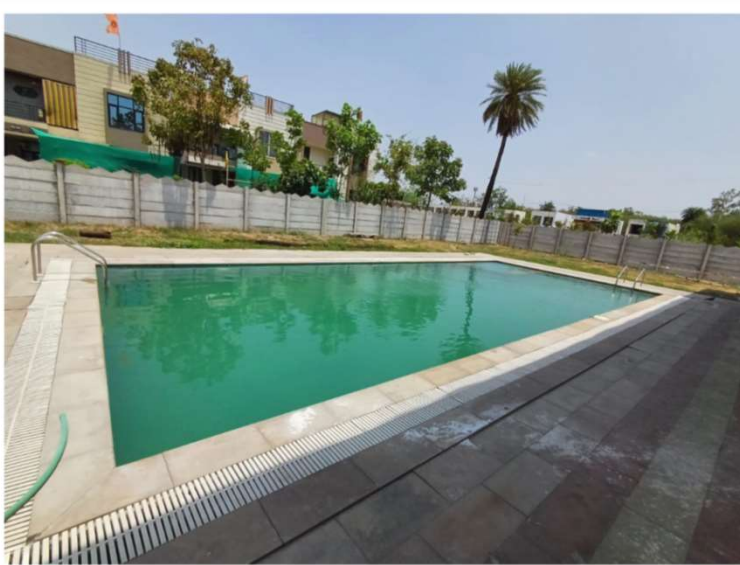
Swimming Pool Filtration System



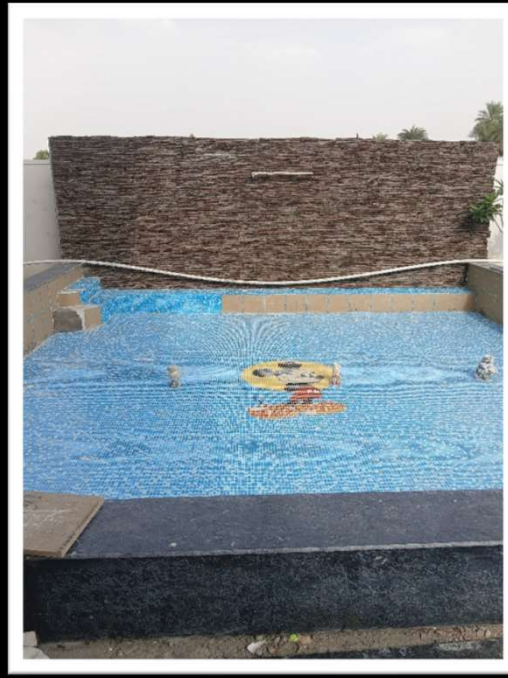
- There are several types of swimming pools. Swimming pools differ in function (tropical swimming pool, sauna), size and conditions such as water temperature, cleaning system and disinfection mechanism. It can be classified as indoor and outdoor swimming pools.
- There is a difference between swimming pools with a system of water recirculation and swimming pools that undergo constant water refreshment. In circulation pools, the water is recycled from a purification system. Part of the water is separated and carried away after treatment. The pool will be filled up with fresh water.
- Swimming pool water must undergo treatment, in order to remain clear and clean, free from harmful substances, bacteria, viruses, algae and suitable for use by swimmers.
- The Pool Water Treatment System: manufactured by our company is based on high-end technology and is installed with all the exclusive and modular parts. Our system allows simple and quick observation as well as cleaning of harmful cells present in pool water.
- Use of Pool Water Treatment System: Our technically advanced pool water treatment system is used for removing micro-organisms and other harmful impurities from the pool water for ensuring safe and healthy water for swimming.

willmer®





DEVASISH CITY SWIMMING POOL 
FILTRATION PLANT



SHUBAH AVENUE SWIMMING POOL  FILTRATION PLANT



ERAWAT GROUP SWIMMING POOL 
FILTRATION PLANT



FIRE FIGHTING SOLUTION

COMPLETE FIRE SAFETY SOLUTION



Willmer Eco Technologies is provide Fire Services include the installation, maintenance, monitoring, and retrofit of fire safety systems such as fire hydrant systems, fire sprinkler systems, fire alarms and detection systems and fire suppression systems.

Control fires before they cause destruction. To prevent fire from devastating life and property, our powerful Fire Suppression Systems effectively protect critical areas that can't be exposed to water.



FIRE FIGHTING SOLUTION



Fire Systems can be divided under two systems:-
Fire Detection and Fire Alarm systems

Fire Fighting Equipment include

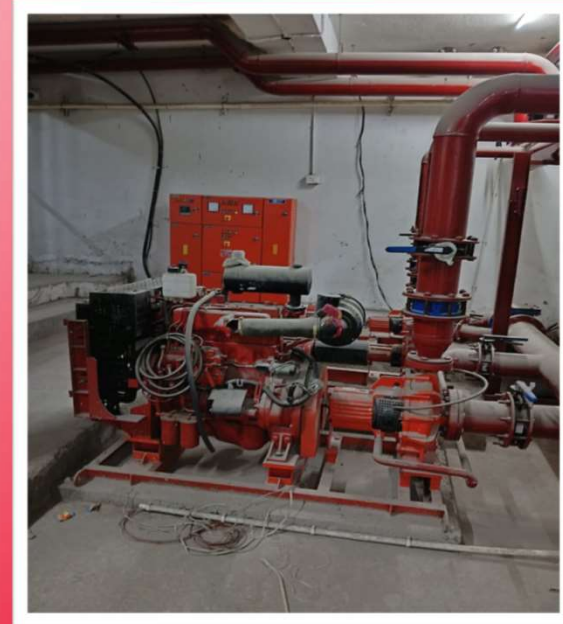
- Fire Detection Systems
- Fire Extinguishers
- Fire hydrants
- Smoke detectors
- Automated sprinkler systems
- Fire suppression system

Intelligent Addressable Fire Alarm Systems - These are often used in large and medium-sized projects and intelligent building an offer benefits in terms of speed of detection, identification of the location of fire and easier maintenance. Conventional Fire Alarm System – This system is designed to detect fires and send out a warning. It consists of smoke detectors at selected locations, to detect smoke at the earliest in the event of a fire.

Hybrid Fire Alarm System - This system combines the effectiveness of both the Intelligent Addressable and the Conventional Fire Alarm System.



FIRE FIGHTING SOLUTION



Fire Suppression Systems:-

Fire suppression systems are built to extinguish or prevent the spread of fire in a building.

Water Based Systems Fire Protection Systems – These systems include Sprinkler, Hydrant, Pre-action Systems, Kitchen Hood System, High and Medium Velocity Mist Systems and Tank Foam System to suit individual fire protection needs.

Gas Based Systems – In this system gas is used to extinguish the fire. It is automatic and within a minute of activation the fire gets extinguished. The various types of gas suppression systems are CO₂, NAF SIII, FM 200 and Inergen.

Once installed, checking and maintenance of the fire system is very important. Since fire safety equipment is used only in the event of a fire, which is not often, it becomes very important to periodically check the equipment and products after installation. The maintenance of the fire products depend on the type of agreement that a customer does at the time of purchasing the equipment.

ANNUAL MAINTAINCE CONTRACTS

- 1. Fire Extinguishers
- 2. Fire Alarm Systems
- 3. Public Address Systems
- 4. Fire Hydrant Systems
- 5. Sprinkler Systems



SOME COMPLETED PROJECT LIST

- ✓ High Court 150 Kld STP Patna Bihar
- ✓ Patna Museum 150 Kld STP- Patna Bihar
- ✓ Dada Darbar Hospital, Barwah (Indore) 25 KLD STP
- ✓ Indian Railway, Kota Consultancy 1 MLD & 1.5 MLD STP
- ✓ R.U.H.S Hospital 100 Kld STP Jaipur, Rajasthan
- ✓ Pollution Control Board 15 Kld ETP Pollution Control Board, Jaipur
- ✓ Pollution Control Board 10 Kld STP Pollution Control Board, Jaipur
- ✓ Medical Collage Sirohi STP 300 Kld Sirohi (Running)
- ✓ Medical Collage Sirohi ETP 200 Kld Sirohi (Running)
- ✓ Railway Work Shop Operation & Maintenance E.T.P 50 Kld - Kota
- ✓ Indian Railways (W .P. O.)(Badnera, Maharashtra)20 C.M.D
- ✓ Rajesh Motors, Hostel Project, Kota, 125 KLD STP
- ✓ Silver Spoon Mess & Hostel, Kota 250 LPH RO
- ✓ Birla Orchid, Hostel, Kota, 500 LPH RO
- ✓ Brilliance Group, Hostel Project, Kota 100 KLD STP, 100 KLD WTP
- ✓ Pixel Group Hostel, Kota 250 LPH RO
- ✓ Lilac Hotel Project, Oil & Grease Removal System
- ✓ ASI Stone Industries, Ramganj mandi, Kota, 150 KLD WTP
- ✓ Florence send Stone Industries Pvt. Ltd., Bundi 100 KLD ETP
- ✓ The Great Mall Of Kota, (Ahaluwalia Contract India Ltd.) 200 KLD STP
- ✓ Presidium School, Ghaziabad 150 KLD STP
- ✓ STP 60 KLD Front side & 30 KLD Rear Side Zetwerek Kota Railway Station Redevelopment (Running).
- ✓ Railway Colony Work Shop 1 Mld STP WCR Kota .
- ✓ Government Mch Hospital 100 Kld STP Tonk, Rajasthan
- ✓ Government Saadat Hospital 100 Kld STP, Bahir Colony, Tonk, Rajasthan
- ✓ Amrit Kaur Hospital 100 Kld STP Amrit Kaur Hospital(Extended Block), Beawar, Rajasthan
- ✓ Mahatma Gandhi Hospital 300 Kld STP Bhilwara, Rajasthan
- ✓ Government Bhagwan Das Hospital 150 Kld STP Kotputli Rajasthan
- ✓ Railway Work Shop 20 Kld ETP Amravati, Maharashtra
- ✓ Railway Work Shop 50 Kld ETP Shakurbasti Delhi
- ✓ Resonance Adventure Ltd., Institute, Kota Revamp 250 KLD STP
- ✓ Ashoka Heights, Group Housing Project, Mathura 100 KLD STP
- ✓ Highway Platinum, Group Housing Project, Mathura 150 KLD STP
- ✓ County walk Township, Indore 100 KLD STP
- ✓ Oasis County walk Township, Indore 150 KLD STP
- ✓ Oasis County walk Township, Indore 150 KLD STP
- ✓ Green Alayam, Group Housing Project, Kota 160 KLD STP
- ✓ Salasar Dham Group Housing Project, Kota 80 KLD STP
- ✓ Om Enclave Housing Society, Kota. 160 KLD STP, 200 KLD WTP
- ✓ RBM MEDICAL COLLAGE 150 KLD S.T.P BHARTH PUR RAJASTHAN (Running)

SOME COMPLETED PROJECT LIST

- ✓ Bagherwal Tripolis, Group Housing Project, Kota 280 KLD STP
- ✓ Skyline , Group Housing Project, Kota 90 M3 Swimming Pool
- ✓ Ansal API , Shushant city I Township, Jaipur, 150 KLD STP
- ✓ Railway Laundry Kota Tender Document Preparation / Consultancy- Kota
- ✓ Janana Hospital Tender Document Preparation / Consultancy- Jaipur Ajmeri Gate
- ✓ Jhalawar Hospital Tender Document Preparation / Consultancy- Jhalawar Hospital
- ✓ District Hospital Nagur Tender Document Preparation / Consultancy - Nagur Rajasthan
- ✓ Railway Work Shop Tender Document Preparation / Consultancy- Kurnool Andhra Pradesh
- ✓ BHEL, Bhopal, Tender Document Preparation / Consultancy 200 KLD STP & 1 MLD WTP
- ✓ Bagherwal Tripolis, Group Housing Project, Kota 280 KLD STP
- ✓ Skyline , Group Housing Project, Kota 90 M3 Swimming Pool
- ✓ Ansal API , Shushant city I Township, Jaipur, 150 KLD STP
- ✓ Railway Laundry Kota Tender Document Preparation / Consultancy- Kota
- ✓ Janana Hospital Tender Document Preparation / Consultancy- Jaipur Ajmeri Gate
- ✓ Jhalawar Hospital Tender Document Preparation / Consultancy- Jhalawar Hospital
- ✓ District Hospital Nagur Tender Document Preparation / Consultancy - Nagur Rajasthan
- ✓ Railway Work Shop Tender Document Preparation / Consultancy- Kurnool Andhra Pradesh
- ✓ BHEL, Bhopal, Tender Document Preparation / Consultancy 200 KLD STP & 1 MLD WTP



CONTACT US AT :-




Head Office Address

Willmer Eco Technologies,

**84, II nd Floor, Above Krashna
Cement, Near Chopati,**

**Gumanpura Shopping Centre,
Kota, Rajasthan 324007**

Phone & Mob. No.

+ 91-9828121516,  

+91-8949293547,  

+91-9116773688,  

E-mail : willmercotech@gmail.com

Web. : www.willmercotech.com